

Table signs print instructions:

BEST PRINTING PRACTICE:

COLOR PRINTER OR COPIER
PRINTED ON 11x17 (TABLOID) CARDSTOCK

PRINT TWO OF EACH SIGN SO YOU CAN DOUBLE SIDE THEM ON A DOWEL



DAiSiES



DAiSiES



DAiSiES



DAISIES



DAiSiES



DAISIES



DAiSiES



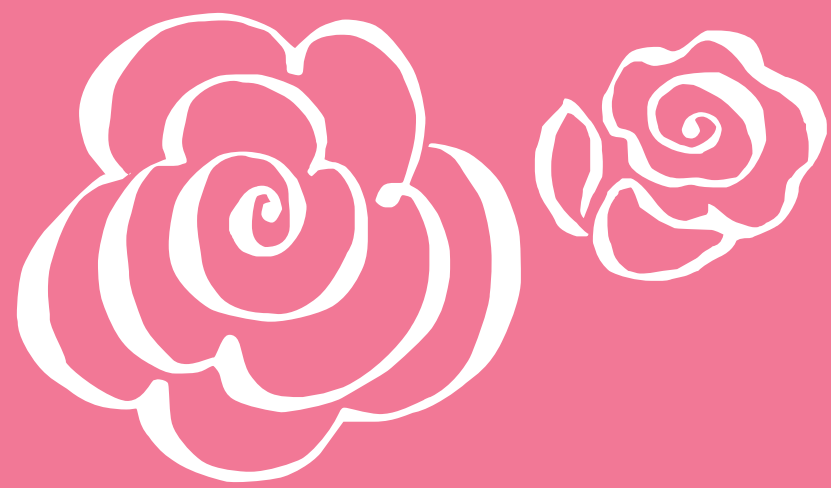
DAiSiES



DAiSiES



DAiSiES



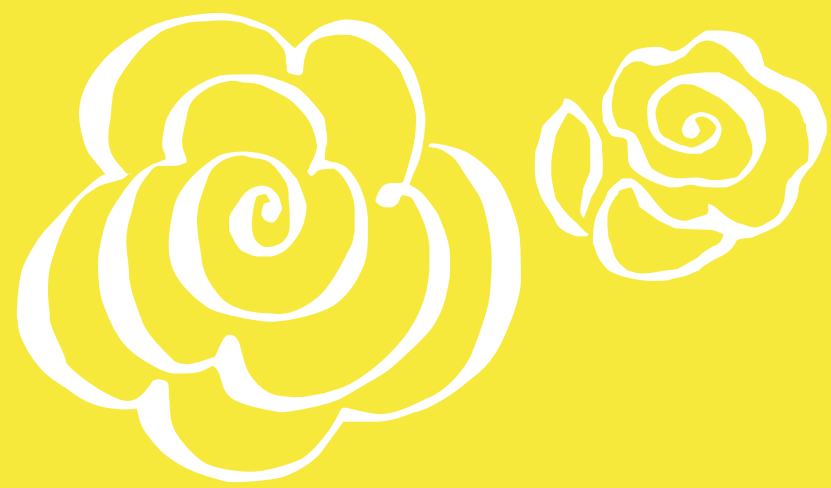
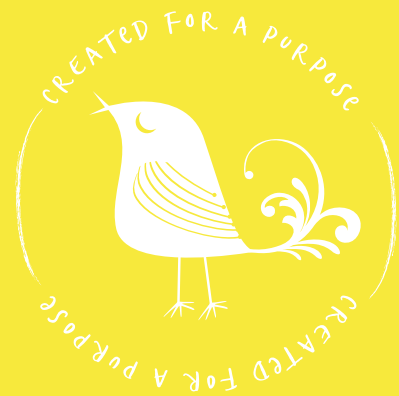
ROSES



ROSES



ROSES



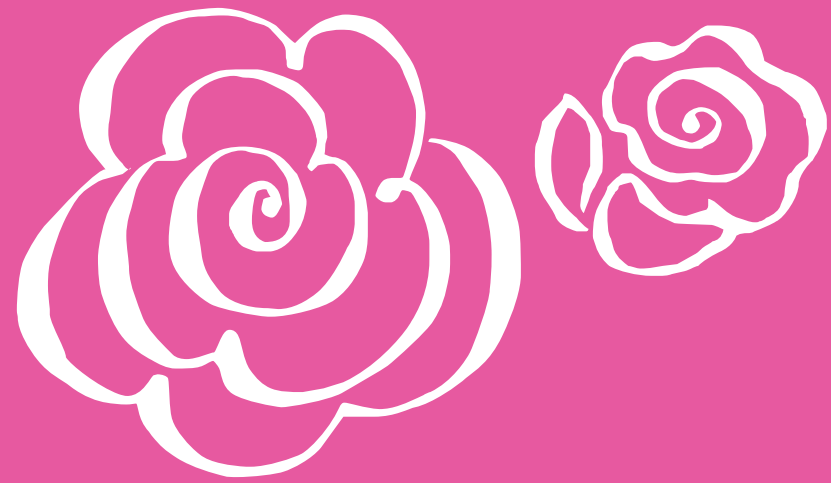
ROSES



ROSES



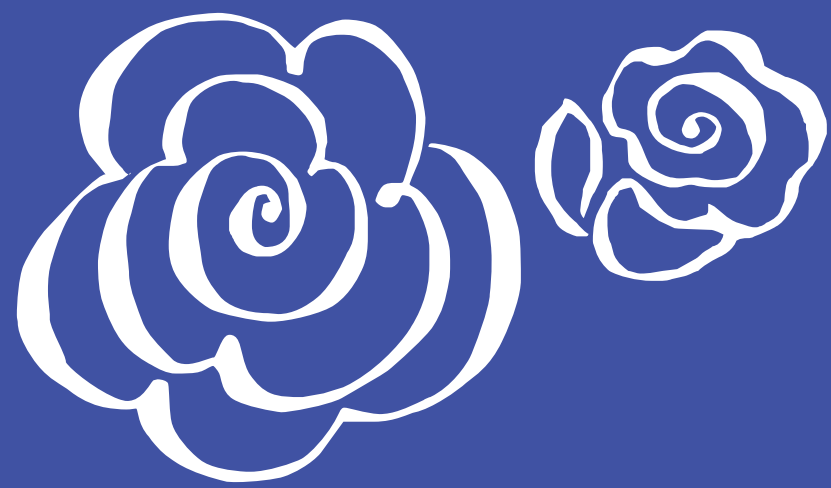
ROSES



ROSES



ROSES



ROSES



ROSES



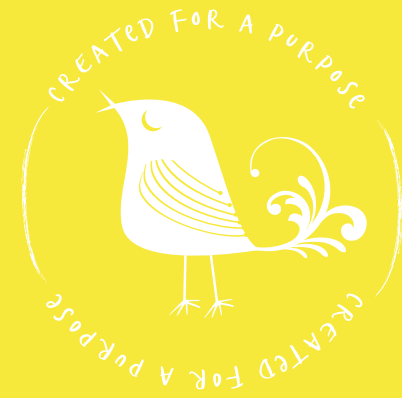
LILIES



LILIES



LILIES



LILIES



LILIES



LILIES



LILIES



LILIES



LILIES



LILIES